

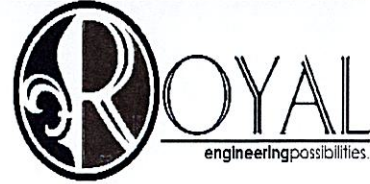
Terrebonne Parish Consolidated Government

BUQUET BRIDGE OVER GRAND CAILLOU HURRICANE IDA REPAIRS

Addendum # 2



Subject: TPCG Hurricane Ida Recovery
Purpose: Addendum 2
Today's Date: 10/29/24



<p>Addendum #2</p>	<p>This Addendum forms part of the Bid Documents and modifies and clarifies the original Bidding/Proposal Documents for the project as noted below. Acknowledge receipt of this Addendum in the space provided on the Proposal Form. Failure to do so may subject the Bidder to disqualification. Bidder is responsible to disseminate this Addendum to all subcontractors concerned.</p>
<p>Specification & Contract Document Revisions</p>	<p>General:</p> <ol style="list-style-type: none"> 1. Please see below questions and answers 2. Please see attached REVISED Plan sheet: <ol style="list-style-type: none"> a. Sheet 001 Title Sheet b. Sheet 213 M4.3 Counterweight Ropes Details (Continued)
<p>Clarifications</p>	<p>N/A</p>
<p>Questions</p>	<p>Question: The Open Socket that is being requested is for 1" wire rope, but the assemblies call for 1-1/8" wire rope. Rope manufacturer cannot put a 1" open socket on 1-1/8" wire rope. One, the 1" socket is not rated for 1-1/8" wire rope and the rope hole opening for a standard 1" socket is 1-1/8", right at nominal. Standard wire rope tolerance is -0%, +5%, so the wire rope won't fit the rope hole. Please advise what direction to go, upsize the open socket or downsize the wire rope?</p> <p><i>Answer: The rope needs to be downsized – it should be 1" diameter not 1 1/8" diameter.</i></p> <p>Question: BOM on sheet M4.2 calls for forged steel on the open socket. Can we estimate cast steel in lieu? No matter the answer above, it will meet full strength of the wire rope.?</p> <p><i>Answer: No. The open socket shall be forged steel. In the Technical Special Provisions (M005 page 19, Part F, Number 3) only sockets for ropes larger</i></p>

**T e r r e b o n n e P a r i s h C o n s o l i d a t e d
G o v e r n m e n t**

**B U Q U E T B R I D G E O V E R G R A N D C A I L L O U
H U R R I C A N E I D A R E P A I R S**

A d d e n d u m # 2

than 1.5" in diameter can be made from cast steel.

Question: The socket shims have a throat opening of 1-1/8". As just stated above, with the standard rope tolerance, these shims won't fit well, if at all. Can we open this up to 1-1/4"? (if the first question changes the wire rope to 1", it can be left at 1-1/8")

Answer: Because the ropes are to be 1" diameter the socket shims don't need to change.

End of Addendum #2

FINAL PLANS

INDEX TO SHEETS

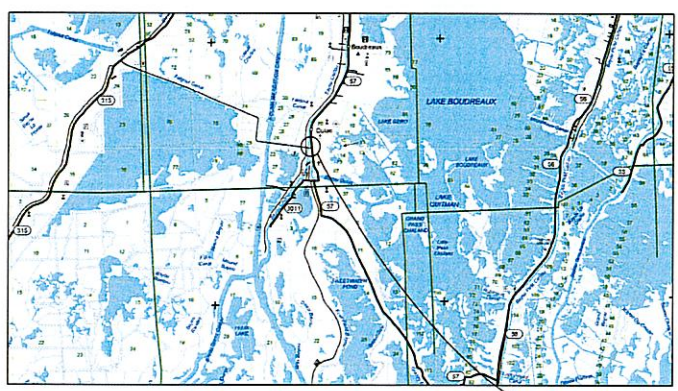
SHEET NO.	DESCRIPTION
1	TITLE SHEET AND LAYOUT MAP
2	SUMMARY OF ESTIMATED QUANTITIES (FEMA PARTICIPATING)
3	SUMMARY OF ESTIMATED QUANTITIES (NON-FEDERALLY PARTICIPATING)
4	PAVEMENT MARKING LAYOUT
5	TRAFFIC CONTROL / DETOUR PLANS
STANDARD PLANS	
NO.	REVISION DATE
6 - 09	TTC-00 (A-D)
10	TTC-16
11	PM-01
	07/02/2018
	07/02/2018
	02/28/2019
STRUCTURAL PLANS	
101 - 121	STRUCTURAL REPAIRS
122 - 133	ACCESS SYSTEMS
MECHANICAL PLANS	
201 - 233	MECHANICAL REPAIRS
ARCHITECTURAL PLANS	
251	WINDOW AND DOOR REPAIRS
ELECTRICAL PLANS	
301 - 306	ELECTRICAL REPAIRS
SPECIAL DETAILS	
NO.	REVISION DATE
401	SD-01
402	BD.2.1.1.0.0.01
403	BD.2.1.1.0.0.02
	08/20/2003
	04/24/2017
	09/30/2024
TOTAL SHEETS: 87	

**TERREBONNE PARISH
CONSOLIDATED GOVERNMENT (TPCG)
PARISH PROJECT NO. IDA-0105
FEMA PW NO. 673937**

**BUQUET BRIDGE OVER GRAND CAILLOU
HURRICANE IDA REPAIRS
TERREBONNE PARISH**



VICINITY MAP



LAYOUT MAP



RECOMMENDED FOR APPROVAL:

HUVAL AND ASSOCIATES, INC.
DATE _____

APPROVED:

TERREBONNE PARISH CONSOLIDATED GOVERNMENT
DATE _____

NO.	REVISION	DATE	APPROVED
1	ISSUED FOR CONSTRUCTION	08/20/2003	[Signature]

SCHEDULE OF REVISIONS



LENGTH AND LOCATION OF WORK

ROAD OR NAME	STATION		LOCAL		ALGEBRAIC SUM OF ALL COUNTERS	GROSS LENGTH	EXCEPTION	BRIDGE LENGTH		ROADWAY LENGTH	
	BEGN	END	BEGN	END				FEET	FEET	FEET	FEET
BUQUET BRIDGE OVER GRAND CAILLOU											
TOTAL											0.089

STANDARD SPECIFICATIONS
THE 2016 EDITION OF THE LOUISIANA DOTD STANDARD SPECIFICATIONS FOR ROADS AND BRIDGES, AS AMENDED BY THE PROJECT SPECIFICATIONS AND TECHNICAL SPECIAL PROVISIONS, SHALL GOVERN.

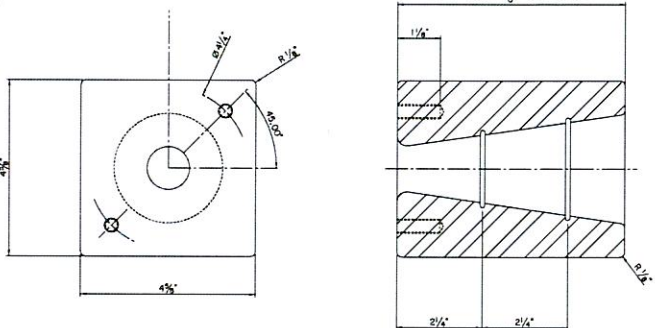
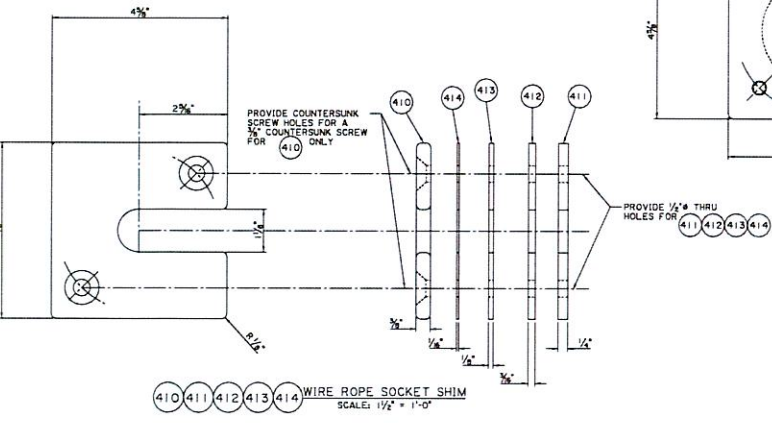
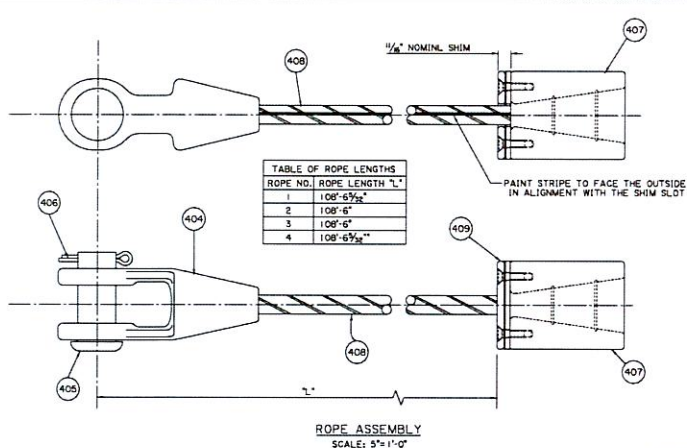
TYPE OF CONSTRUCTION
MOVABLE BRIDGE STRUCTURAL, MECHANICAL, ELECTRICAL, AND ARCHITECTURAL REPAIRS.

TITLE SHEET AND LAYOUT MAP

BUQUET BRIDGE OVER GRAND CAILLOU HURRICANE IDA REPAIRS

TERREBONNE PARISH CONSOLIDATED GOVERNMENT

FEMA PW NO. 673937



BILL OF MATERIALS

PART	QTY	DESCRIPTION	MATERIAL/MANUFACTURER
407	16	WIRE ROPE SOCKET	ASTM A660 CL. K
408	16	1" WIRE ROPE, 6X19 CLASS; EETIPS WITH HFC; GALVANIZED	SEE TECHNICAL SPECIAL PROVISIONS
409	32	3/8" COUNTER SUNK SET SCREW	STAINLESS STEEL TYPE 304
410	16	3/8" WIRE ROPE SOCKET SHIM	STAINLESS STEEL TYPE 304
411	16	1/4" WIRE ROPE SOCKET SHIM	STAINLESS STEEL TYPE 304
412	16	3/8" WIRE ROPE SOCKET SHIM	STAINLESS STEEL TYPE 304
413	32	1/4" WIRE ROPE SOCKET SHIM	STAINLESS STEEL TYPE 304
414	32	1/4" WIRE ROPE SOCKET SHIM	STAINLESS STEEL TYPE 304

MOVABLE BRIDGE WIRE ROPE NOTES:
 1. SEE TECHNICAL SPECIAL PROVISIONS FOR MORE INFORMATION.

M4.3 212

DESIGNED BY: J. W. BLOOM
 CHECKED BY: W. J. BLOOM
 DATE: 10/28/2024
 DRAWN BY: J. W. BLOOM
 DATE: 10/28/2024
 SCALE: AS SHOWN
 SHEET 3 OF 3

132-Report Plans
 BUDGET BRIDGE OVER GRAND CANYON
 HURRICANE, GA. 31745

COUNTERWEIGHT ROPES
 DETAILS (CONTINUED)

HUVAL
 325 West Park
 Fort Worth, Texas 76102
 Phone 817-334-2744