



COMMUNITY DEVELOPMENT BLOCK GRANT FUNDING

GUSTAV/IKE PLAN AMMENDMENT

November 17, 2020

Gordon E. Dove, Parish President
Chris Pulaski, Director of Planning and Zoning
Presenter: Jennifer Gerbasi, Senior Planner





AGENDA

- Overview Parish Gustav/Ike Projects
- New Project Proposal
- Q&A
- Public Comment

Police Chief:
Dana Coleman

Councilman:
John Navy





PUBLIC COMMENT

- Comments will be documented and submitted in the record
- Further comments can be made to the Parish Council at a future meeting
- Written comments will also be accepted until December 1st.





CDBG FUNDING AWARDED

- \$135 Million awarded in 2009 for the Gustav/Ike storms
- Community Development Block Grants
- Provided by the Department of Housing and Urban Development
- Managed by the Louisiana Office of Community Development.





ELIGIBLE PARISH ACTIVITIES

- Infrastructure
- Housing
- Economic Recovery and Revitalization





CDBG LEVEE CONSTRUCTION AND IMPROVEMENTS

- Falgout Canal Levee
- Ashland North
- Cane Brake to Ashland (to landfill)
- East Houma Surge Levee (Thompson Road Ext.)
- Upper Dularge (East)
- Pointe Au Chene
- Ward 7 Levee Lift
- Suzie Canal Ext. (North)





FORCED DRAINAGE IMPROVEMENTS

- Ashland Drainage Pump Station
- Upper Grand Caillou Pump Station-
Shrimpers Row
- Baroid Pump Station/Bayou Lacarpe
- Buquet Drainage Improvements
- Summerfield Pump Station





POLLUTION CONTROL AND SEWERAGE IMPROVEMENTS

- Gray facility
- Clean waterways/
Derelict Vessels
~124 units



Sample of sunken vessels. Approximately 200 identified.





OTHER INFRASTRUCTURE

- Juvenile Detention Facility
- Department of Public Works
Administrative Building
- Falgout Canal Pontoon Bridge
- Waterworks Valve for TGMC





HOUSING EXAMPLES

- Homebuyers' Assistance
- Homeowner Buyouts ~24
- Repair Assistance - Owner Occupied
- Repair Assistance - Renter Occupied
- Utilities and roads for Parkwood Place
- Demolition of blighted properties ~9





NEW PROPOSAL

- Funding is available from savings on the projects listed above
- Reallocations are allowed after a full public vetting and request to the Office of Community Development Disaster Recovery Unit
- Preliminary approval received





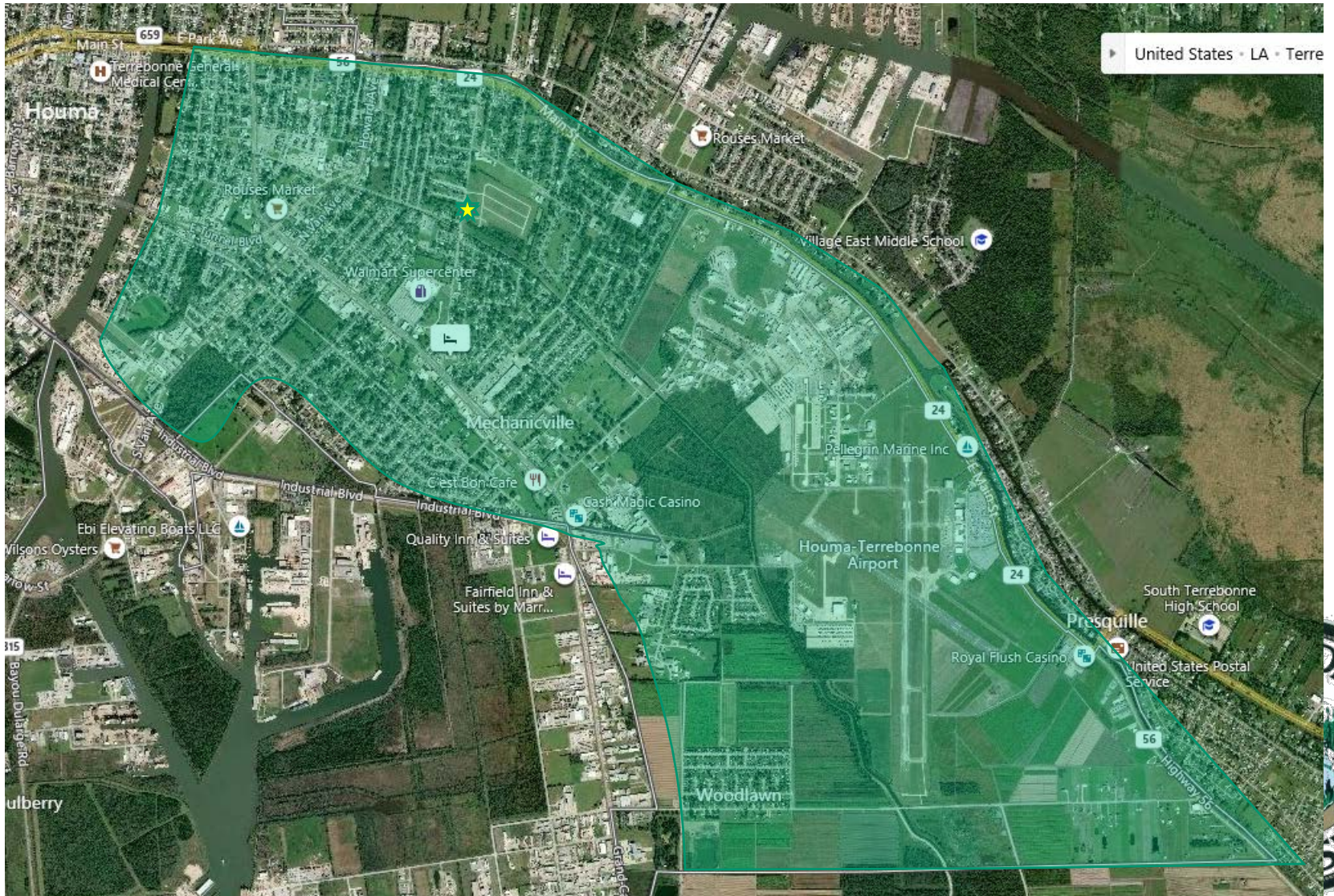
EASTSIDE PUBLIC SAFETY SUBSTATION GOALS

- To have a police presence and service for the community on the eastside of the Intracoastal
 - Shorter response time if the bridge or tunnel are out
 - Consistent support for the local community
- To serve a forum for community education
 - Community education regarding police initiatives
 - Community meetings requesting service from police
 - Neighborhood watch meeting place





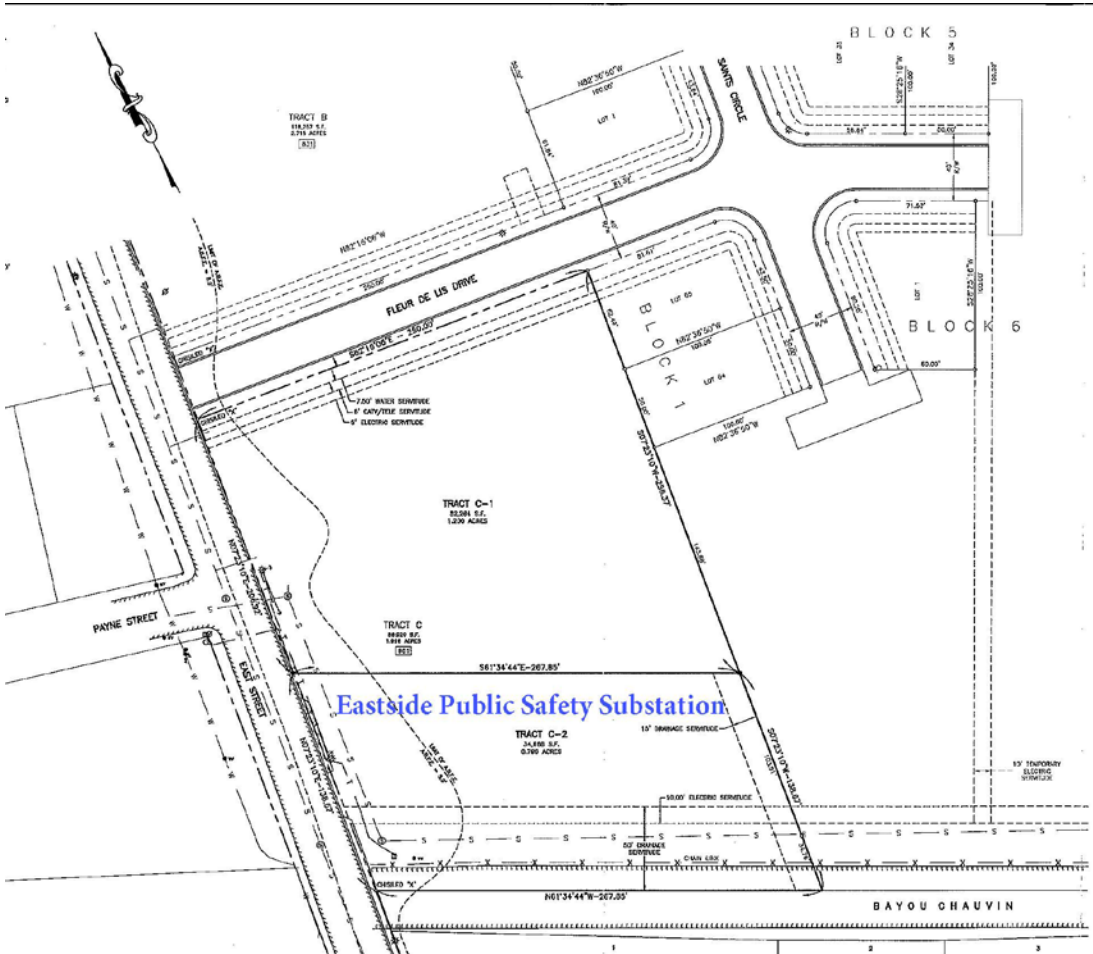
HOUMA POLICE DEPT EASTSIDE SERVICE AREA





SUBSTATION LOCATION

835 EAST STREET



VICINITY MAP
SCALE 1" = 200'

NOTE: NO STRUCTURE, FILL, OR OBSTRUCTION SHALL BE LOCATED WITHIN ANY DRAINAGE CATCHMENT OF DEDICATED FLOOD FLAP.

LEGEND

- FOOD PROPERTY BARRIERS ○
- SET 3/4" I.R. (CALCULATED INTERSECTION) *
- EXISTING WATER LINE — W —
- EXISTING GAS LINE — G —
- EXISTING SEWER LINE — S —
- EXISTING OVERHEAD POWER LINE — E —
- EXISTING TELEPHONE LINE — T —
- EXISTING FENCE — F —
- EXISTING POWER POLE W/ LIGHT ○
- EXISTING POWER POLE ○
- EXISTING ARCHIVE ○
- EXISTING TELEPHONE PEDestal ○
- EXISTING WATER VALVE ○
- EXISTING FIRE HYDRANT ○
- EXISTING WATER METER ○
- EXISTING GAS VALVE ○
- EXISTING GAS METER ○
- EXISTING SEWER MANHOLE ○
- EXISTING GROUND SIGN WITH REFLECTIVE SURFACE ○
- MINORIAL ADDRESS — SEE SHEET
- CHANGING LOT BOUNDARY — SEE SHEET
- 60' FLOOD WALL OR DRAINAGE DITCH ○
- 1" BOLLARD BRASS SIGN ○
- 60' FLOOD WALL OR DRAINAGE DITCH ○
- (DATE SET MAY 11, 2017)

FINAL PLAT
LAND USE: COMMERCIAL
OWNER: BRIARPATCH, L.L.C.

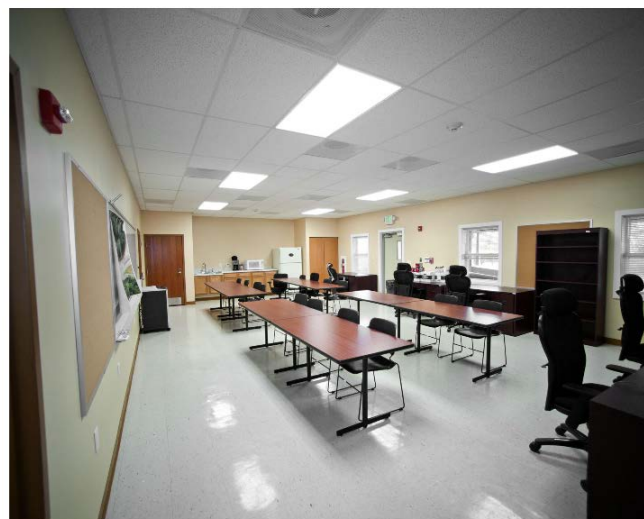




EASTSIDE PUBLIC SAFETY SUBSTATION FACILITY

The modular police station features durable offices, a meeting room, and reception space in a secure facility.

- Kitchen/Breakroom
- Restrooms/ADA compliant
- Air Conditioning
- Janitor Closet
- Lockers
- Showers
- Evidence Storage





EASTSIDE PUBLIC SAFETY SUBSTATION FACILITY

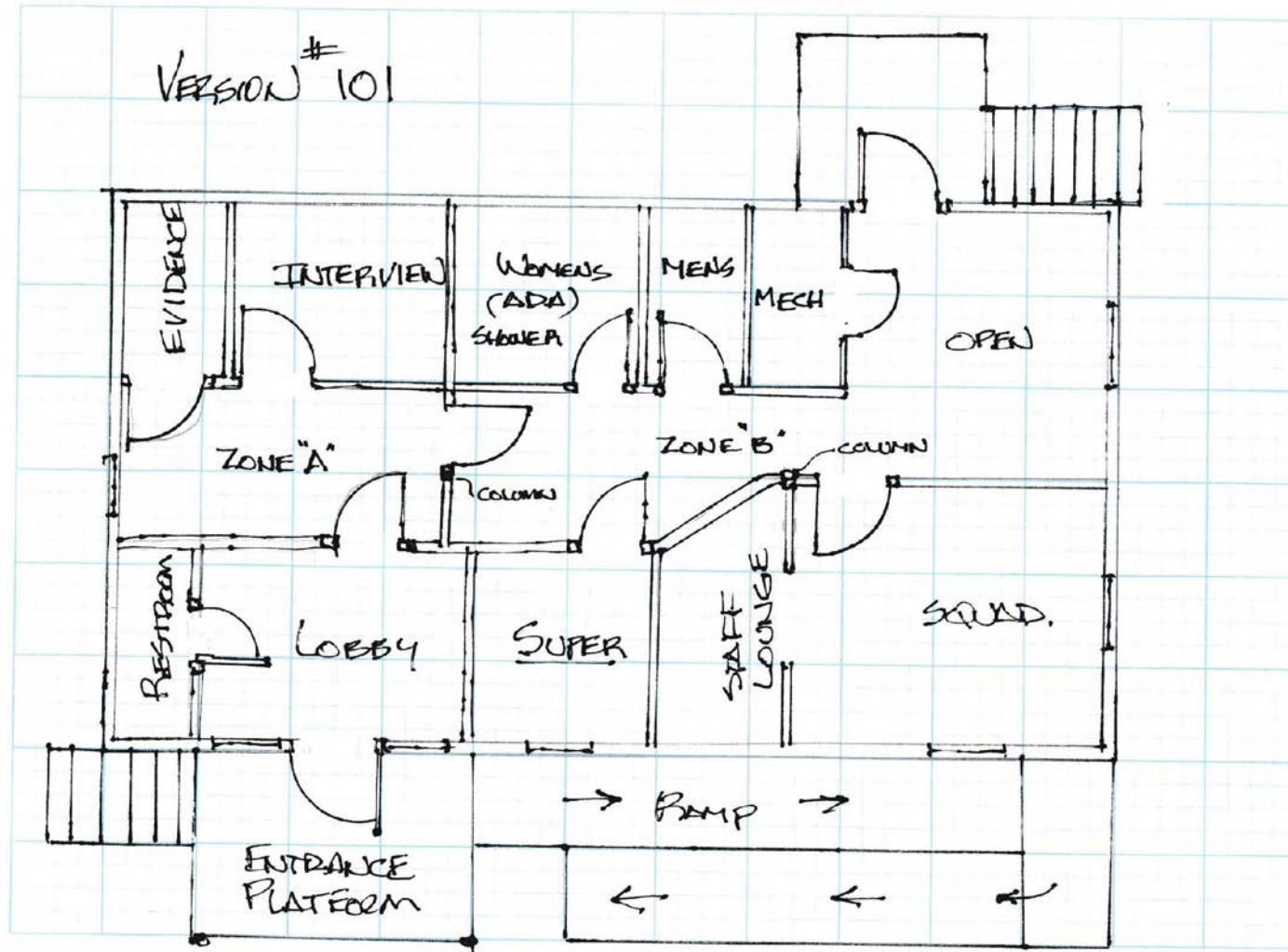
Safety Performance:

- Elevated 500 yr floodplain +1 ft
- Windows for 170 mph winds
- Bulletproof glass
- Ramp for handicap access
- Bullet resistant sheathing
- Backup Generator
- Two entry/exit doors
- Timed outdoor lighting
- Entry and internal camera systems
- Door security





EASTSIDE SUBSTATION FACILITY SKETCH





ELIGIBILITY FOR INFRASTRUCTURE

- Need arising from the 2008 storm
- The project is the best alternative to resolve the issue
- The parish can determine the need for the facility, threat to health, safety or welfare
- No other funds are available in the timeframe required





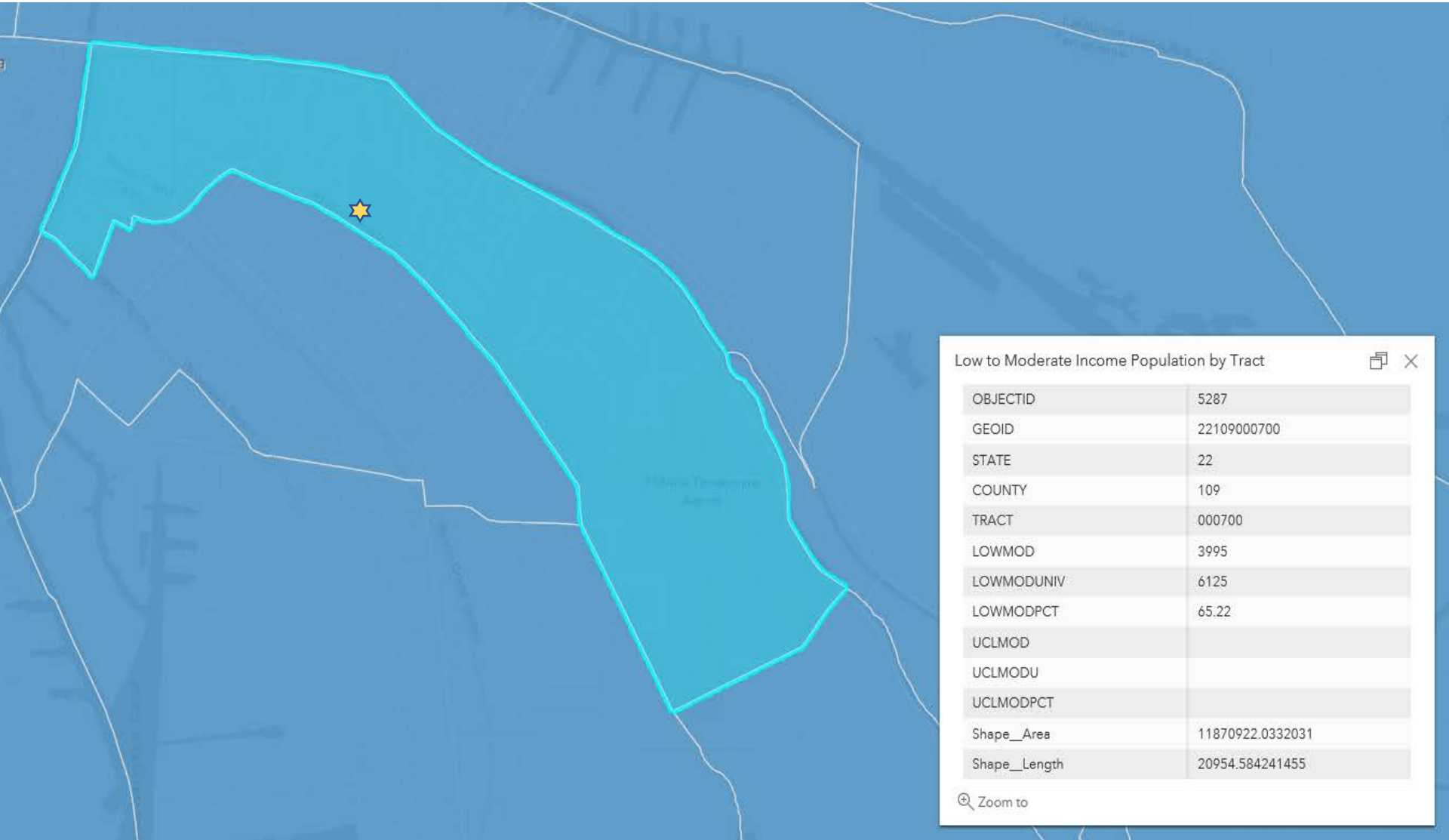
REQUIREMENTS FOR ALL PROJECTS

- Each project must meet a national objective of the CDBG program
 - Urgent need
 - Assist low to moderate income residents
 - Eliminate or avoid slum and blight
- This area meets the goal to benefit low to moderate income residents





LOW TO MODERATE- INCOME AREAS



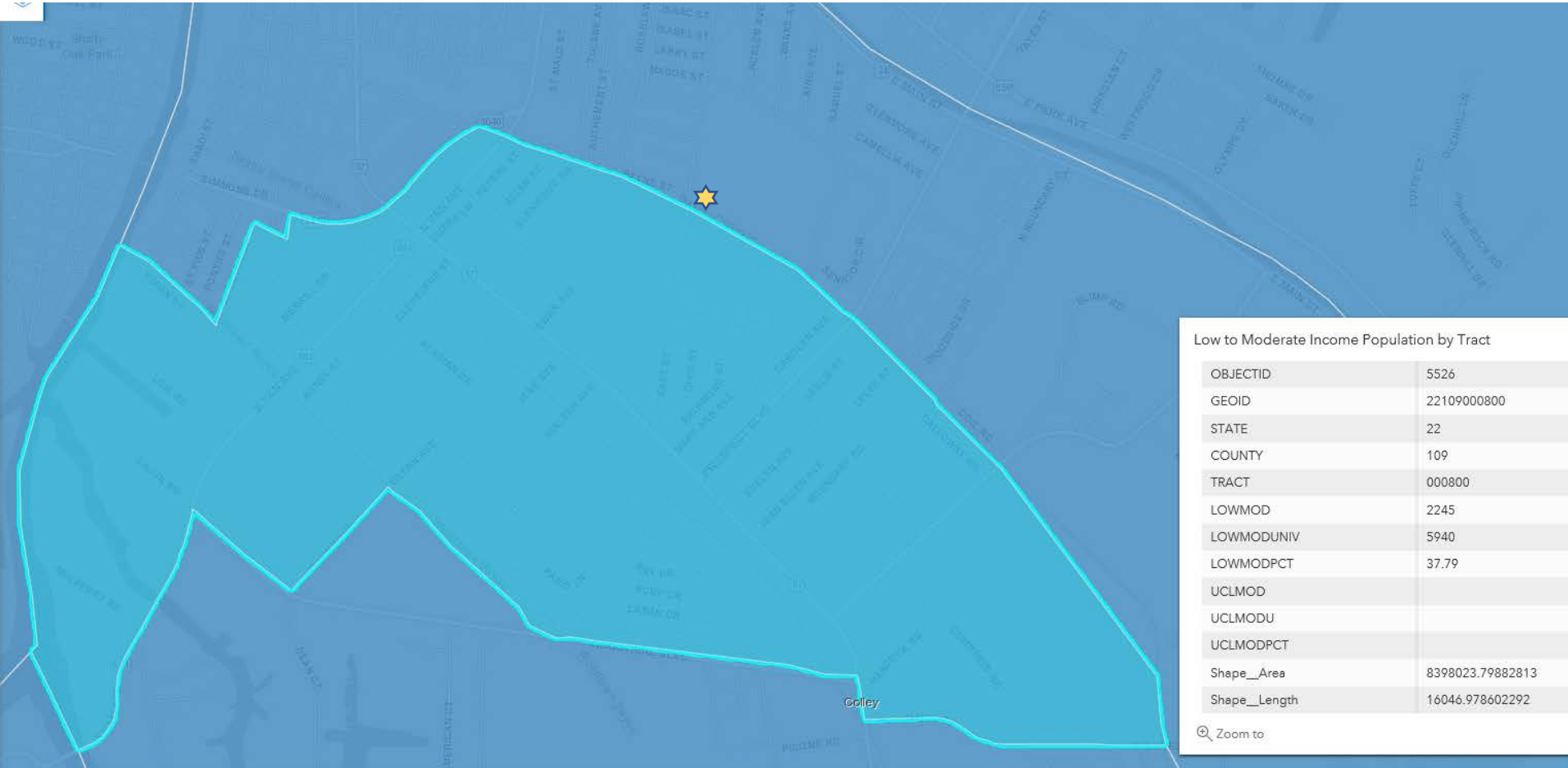
Low to Moderate Income Population by Tract

OBJECTID	5287
GEOID	22109000700
STATE	22
COUNTY	109
TRACT	000700
LOWMOD	3995
LOWMODUNIV	6125
LOWMODPCT	65.22
UCLMOD	
UCLMODU	
UCLMODPCT	
Shape__Area	11870922.0332031
Shape__Length	20954.584241455

Zoom to



NEIGHBORING MODERATE- INCOME AREAS





IMMEDIATE NEXT STEPS

- Amend the Gustav/Ike Draft Action Plan
- Present project to Council December 7th
- Take other public comments at Council
- Submit to the State for approval
- Receive approval





AFTER APPROVAL

- Submit specific project application to HUD for approval
- Procure engineering and services
- Receive environmental clearance
- Public bids for all work related to CDBG projects
- Seek Council approval for each contract





CONTACT INFORMATION

Have questions after the meeting?

Terrebonne Parish Consolidated Government
Dept. Planning and Zoning
Recovery Assistance and Mitigation Planning
8026 Main Street, Suite 201
Houma, Louisiana 70360

Jennifer C. Gerbasi
985-873-6565
jgerbasi@tpcg.org



LOUISIANA
Office of
COMMUNITY
DEVELOPMENT

